

...Driven by your application,  
defined by precision. We engineer  
enclosures to meet or exceed  
form, fit, and function.....

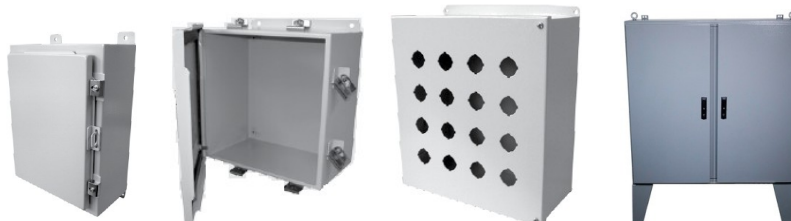
# THE ENCLOSURE EXPERTS

## Fibreglass/Polycarbonate



Ratings Range including N4X & IP65/66  
\*Entries/Cutouts & Accessories are available\*

## Steel Constructed



Ratings Range including N12 – N4  
\*Entries/Cutouts & Accessories are available\*

## Stainless Steel Constructed



Ratings Range from: CLASS I, II, III DIVISION I & II, ZONE I & II, GROUPS: ,B,C,D,E,F,G, ExD, ATEX & IECEx  
\*Custom builds, entries and viewing windows are available\*

## Explosion proof, Cast Aluminum Constructed



Ratings Range from: CLASS I, II, III DIVISION I & II, GROUPS: ,B,C,D,E,F,G, ExD, ATEX & IECEx  
\*Custom builds, entries and viewing windows are available\*

At LORD ELECTRICAL, problem-solving is at the core of everything we do. We specialize in creating custom electrical enclosures designed to meet the toughest demands. Whether it's stainless steel, polycarbonate, fiberglass, or cast aluminum explosion-proof enclosures, our team is ready to engineer the perfect solution. From NEMA, IP, ExD to IECEx-rated enclosures, we produce reliable protection built to perform in extreme environments. Need a custom size? A special mounting configuration? A unique application? We thrive on complexity and are eager to collaborate with you to build exactly what your project requires.



## At Lord, we're with you every step of the way...

From the start, we clearly and concisely ask the key questions to find the optimal enclosure solution.

- Application and rating
- Optimized package dimensions
- Cooling/Insulated design criteria
- Entries and cutouts.
- Structural design and locating.
- Hardware as required.

## Professional Solutions

If the project specifications isn't clear, you can count on LORD ELECTRICAL to find the optimal enclosure solution, to your needs.

## A wide variety of Material and Customization.

### Enclosure Materials

- Polycarbonate
- Fiberglass
- Aluminum
- Painted steel
- 304#4/304L Stainless
- 316#4/316L Stainless
- Custom materials and layout on request